

夜飲去酒之

如趙忠文王

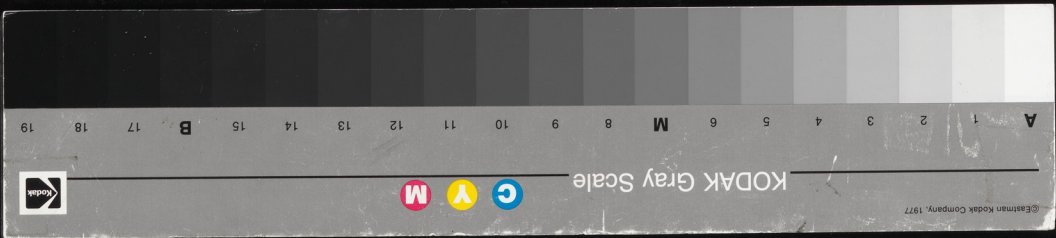
十二子有

力竭之

大破之

向車之

也法矣





行王曰



之成

如

海

海

海

海

如





Handwritten text in a cursive script, likely a historical document or manuscript. The text is densely packed and spans the entire width of the page. It appears to be a list or a series of entries, possibly names or titles, written in a fluid, connected hand. The ink is dark, and the paper shows signs of age and wear. The text is written in a style characteristic of the Ottoman Empire or similar regions, possibly in a language like Persian or Turkish. The entries are separated by small gaps, and some lines are longer than others, creating a rhythmic pattern across the page. The overall appearance is that of a well-preserved but aged historical record.